

ASPEN

SPC RIGID CORE LUXURY VINYL PLANKS



Midastiles
BEYOND THE SQUARE
TILE
SPACE
GROUP

SPC RIGID CORE LUXURY VINYL PLANK

SPC flooring stands for stone plastic composite. Known for being 100% waterproof with unparalleled durability, these engineered luxury flooring planks use advanced technologies to beautifully mimic natural wood and stone at a lower price point.

BENEFITS OF SPC FLOORING

WATERPROOF: This is one of the biggest factors in choosing an spc vinyl. It is 100% waterproof, which means it can be installed in kitchens, bathrooms, laundry rooms and restaurants without worry!

STABILITY IN TEMPERATURE FLUCTUATIONS: With the stone construction, an SPC vinyl core is more stable in environments with temperature changes.

APPEARANCE: SPC flooring can have a variety of looks, textures and styles. It will be hard to believe they are vinyls!

INSTALLATION: SPC vinyl flooring is a click-lock installation system. It is installed similarly to a regular vinyl and laminate floating floor with a tongue and groove installation. No glues or extra tools are required!

COMFORT: The SPC vinyl floor is going to feel more sturdy and cushioned under foot than a traditional vinyl due to the dense core and thickness of the plank. A thicker plank will give you more comfort. Additionally, Aspen vinyl comes with attached underlay that adds to the softness under foot.

AFFORDABILITY: SPC plank flooring is very budget friendly. Depending on the brand and features, you can find SPC flooring in a variety of price ranges. Features like attached underlay, texture and edges can increase a floors price.

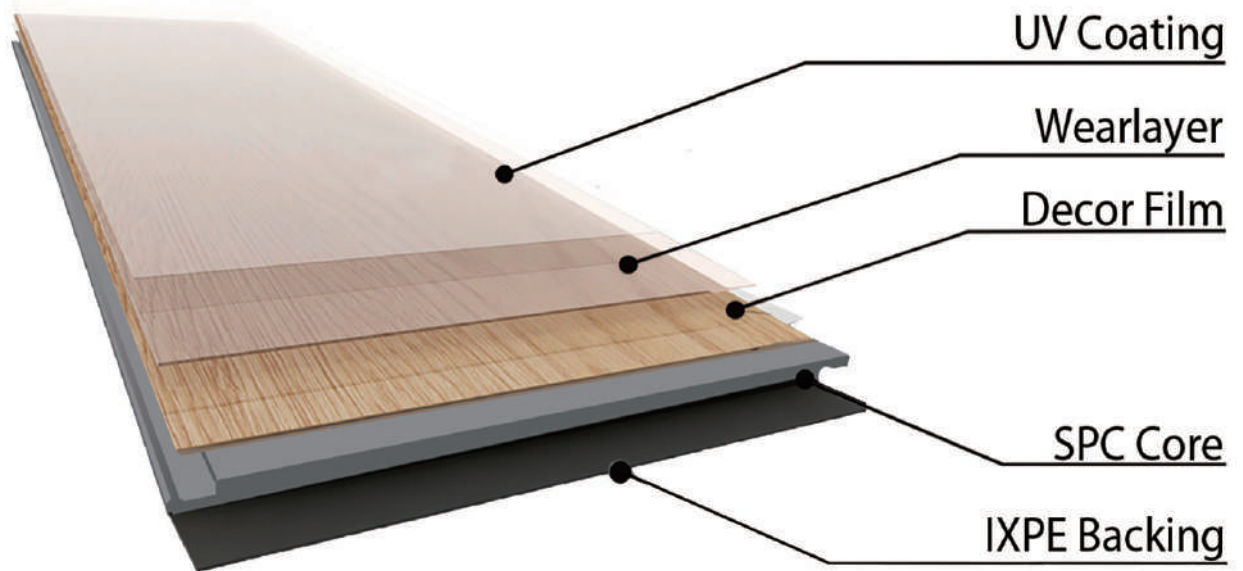
EASY MAINTENANCE AND CLEANING: An SPC flooring will have the same cleaning and maintenance needs as a regular vinyl. These planks are designed to be easily cleaned with regular sweeping and mopping.

FIRE RATING: The aspen range has been tested as per EN 14041:2004 & BS EN 14041:2004 - 4.1 Reaction to fire resulting in a Classification of Bfl-s1.

DURABILITY: Aspen SPC range have a 0.5mm wear layer with a 5mm core, making the Aspen range ideal for most areas.

FORMALDEHYDE AND PCP FREE: The Aspen range has been tested as per EN 14041:2004 & BS EN 14041:2004 - 4.2 Pentachlorophenol & 4.3 Formaldehyde Emission with a PASS result.

SOUND REDUCING: Aspen range has a built in IXPE underlay that is sound reducing and has an Impact Insulation Class (IIC) rating of 54. The IXPE is also odorless and softer than standard EVA product.



UV STABLE: Aspen range has a UV coating to protect it from UV damage. Tested with ASTM F1515-15 with a Pass result.

UNDERFLOOR HEATING: Aspen range is suitable for use over underfloor heating.

RECYCLABLE: Aspen is full recyclable after use.

HEALTHY: Aspen range is antibacterial and mould resistant making it a healthy option for the home.

ANTISLIP RATING: Aspen is rated an Ramp Rating (Oil-wet ramp test) of R10.

With all the benefits of SPC flooring, you can see why this is such a highly rated material! From a cushioned step, to dent resistance and waterproof core, you can't go wrong with an Aspen SPC vinyl. Whether it is for a busy home, rental property, this floor does it all.



WARRANTY



NOISE REDUCING



PET FRIENDLY



LOW MAINTENANCE



**UNDERFLOOR
HEATING**



WATERPROOF



2G CLICK SYSTEM



SLIP RATING



SHADE VARIATION



RECYCLABLE

ASPEN



MIST



MT1796 Aspen Mist SPC Flooring 226x1524mm



ASHWOOD



MT1795 Aspen Ashwood SPC Flooring 226x1524mm



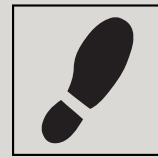


BELOW: MT1795 Aspen Ashwood SPC Flooring 226x1524mm

ABOVE: MT1796 Aspen Mist SPC Flooring 226x1524mm



ASPEN



DRIFTWOOD



MT1792 Aspen Driftwood SPC Flooring 226x1524mm



RIVER



MT1793 Aspen River SPC Flooring 226x1524mm





BELOW: MT1793 Aspen River SPC Flooring 226x1524mm

ABOVE: MT1792 Aspen Driftwood SPC Flooring 226x1524mm



ASPEN



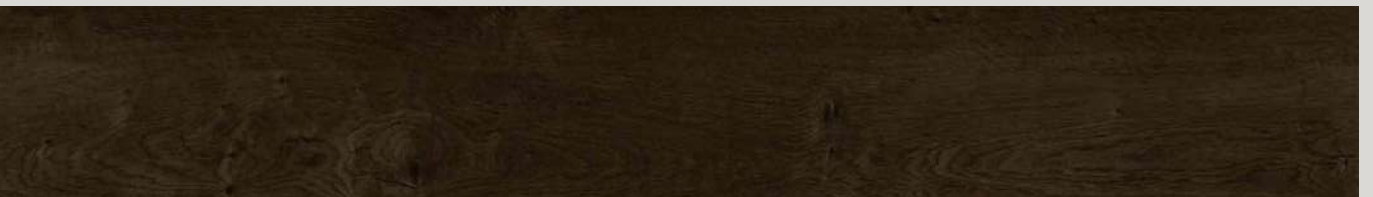
AUTUMN



MT1797 Aspen Autumn SPC Flooring 226x1524mm



MOUNTAIN



MT1794 Aspen Mountain SPC Flooring 226x1524mm





BELOW: MT1794 Aspen Mountain SPC Flooring 226x1524mm

ABOVE: MT1797 Aspen Autumn SPC Flooring 226x1524mm



INSTALLATION INSTRUCTIONS

1. PREPARATION

TOOLS NEEDED: Pencil, folding rule, angle, spirit level, rubber hammer, box cutter and spacer.

Make sure that the packages and planks are only stored horizontally and check the planks for damage before you start the installation. Do not use broken planks and treat each plank carefully to protect the click system. In the first step please make sure that the surface is smooth, dust-free and dry.

Especially in new buildings you have to be sure that mineral surface (e.g. screed) doesn't have any residual moisture. It is also important to ensure that your subsurface is free of wax, grease, solvents and paint. If the surface is not completely flat it must be levelled with a levelling compound. Before you start laying, that packages must be acclimatized over a period of 24 hours at room temperature.

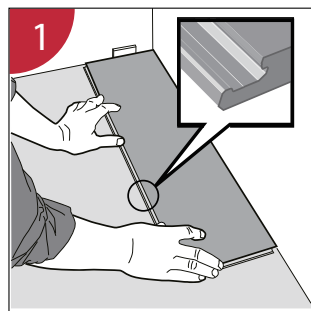
Before you lay the first row, calculate the width of the first and last row. In this way you avoid the risk of having a plank which is too short to finish the last row. Usually the boards of the first and last row have to be cut in width and length. The planks can be shortened to the correct dimensions simply and easily by using the box cutter.

Before and during installation make sure that you plan an expansion joint of at least 5mm between the planks and the walls/solid objects. For that you can use spacers. This is the only way to ensure that the expansion joint and the necessary distance are maintained. You can cover the expansion joints with skirting boards after you finish the installation.

The CLICK SPC products are installed without a fixed connection to the subsurface. This gives you the opportunity of an easy installation of the floor without professional knowledge.

In order to achieve a natural look of the decor it makes sense to install planks mixed from all packages. For optical reasons we recommend installing the floor along the light incidence. If there are several light sources choose the largest one as an orientation. The surface can change colour after a period of time if it is exposed to direct sunlight. When shortening the planks make sure you do not use any remaining pieces that are smaller than 30cm, if a room size is exceeding 100m² it is necessary to incorporate an expansion joint of at least 10mm.

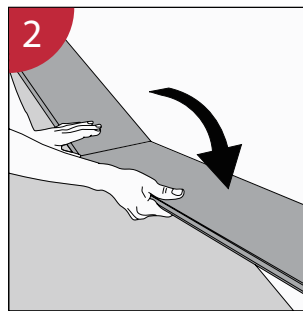
2. INSTALLATION



First plank, first row.

Place a distance 8mm thickness to the left and position the plank against the wall. Later, after 3 rows, you can easily position the flooring against the front wall with distances 8mm.

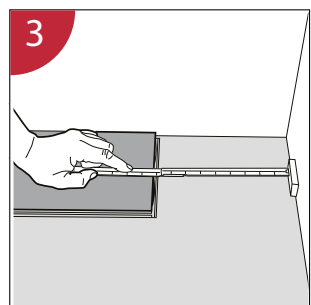
Prior to installation, measure the width of the room to check if the first row should be cut length wise to get a more equal width of the first and last rows.



Second plank, first row.

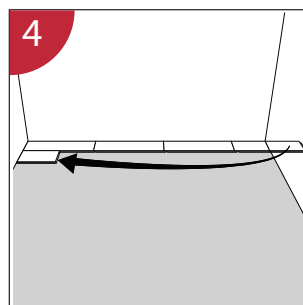
Press the short end of the next floorboard at an angle to the first one and then lay down.

Complete the first row in the same way.



At the end of the first row, put a distance of 8mm, to the wall and measure the length of the last plank.

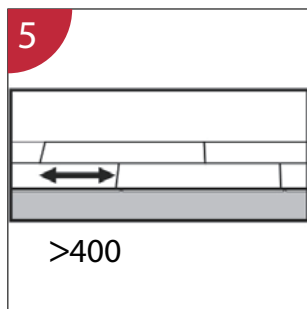
Cut the last panel to correct length, recommended min. length is two times the width of the plank.



Second row.

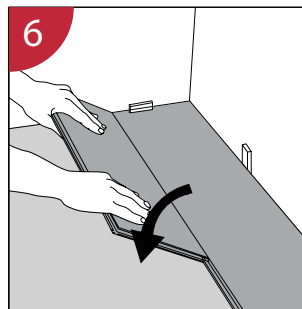
Position the remaining part of the first row's last plank as the first plank of the second row. Keep again two times the width as a minimum length.

Put a distance against the wall.

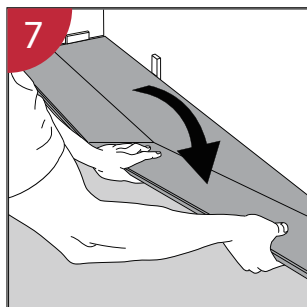


General.

Distances between short ends. Minimum distance between short ends of the planks in parallel rows shall not be less than about two times the width of the plank.

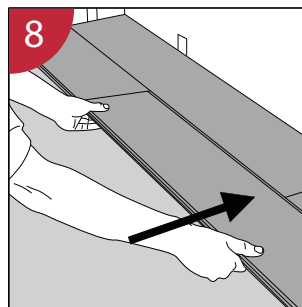


Place the floorboard on an angle against the floorboard in the previous row, press forward and fold down at the same time. Leave the panel in a somewhat up angled position where the panels start to lock. To make this further easier, a wedge with the suitable angle can be placed under the plank near the short side joint as support.

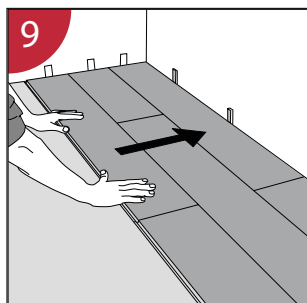


Second plank, second row.

Place the short end of the floorboard at an angle against the previous installed floorboard and fold down all the way.



Push to slide the plank against the row in front so it aligns with the first plank. Put in down like the first plank when the floorboards are positioned tightly together. The first/previous plank can now be folded completely down to horizontal position and if a wedge is used it can be moved to the next short end joint.



After 2-3 rows.

Adjust the distance to the front wall by placing a distance of 8mm. Keep the distances in position during the entire time of installation and remove once the installation is completed.



If the wall is uneven, the floorboards must be adapted to its contours. Mark the floorboards with the contour of the wall. Do not forget to leave an 8mm space to the wall.

This procedure shall be used also with the first row if necessary.

NOTE: If using in kitchen area the kitchen units need to be installed prior to SPC installation, the kitchen cabinets cannot go over a floating floor. Ensure you advise the kitchen company you are using floating floor so they can allow the height in the kick boards.

3. MAINTENANCE

To avoid damage of the floor we recommend you stick plastic cushions under the feet of furniture or heavy objects. Protect the planks from sources (e.g. cigarettes, fireplace,...) and possible protrusions. Avoid using acetone and chlorinated solvents (e.g. trichloethylene) and oils.

Do not use Waxes or glazes and do not polished or paint the floor. We recommend you clean your floor once a week with a vacuum cleaner/or a damp mop, but make sure that no water remains on the floor and that it dries quickly.

Residential steam mops can be used on this product. Use the lowest power/heat setting, with a suitable soft pad. Do not hold the steam mop on one spot for any extended period of time. Refer to steam mop's manufacturer instructions for proper usage on this product.

We recommend non-staining vinyl-backed mats or woven rugs. Do not use rubber or latex backed mats or rugs, as the chemical (antioxidant) used to keep the backing from becoming brittle can permanently stain the floor.

We recommend using the Bona Spray Mop.

***A full maintenance, Warranty and terms and conditions are available on request.

TECHNICAL STANDARDS

TECHNICAL CHARACTERISTICS	TEST METHOD	STANDARD	ASPEN
MEASUREMENT & SURFACE APPEARANCE			
LENGTH	ISO 24337:2006	±2.0mm	PASS
WIDTH	ISO 24337:2006	±0.2mm	PASS
THICKNESS	ASTM F387-17	±0.20mm	PASS
THICKNESS, WEAR LAYER	ASTM F410-08(2017)	COMMERCIAL, 0.5mm	PASS
PHYSICAL PROPERTIES			
RESIDUAL INDENTATION	ASTM F1914-17	Average ≤0.18mm	PASS
DIMENSIONAL STABILITY	ISO 23999:2008 (70°C, 6h)	Residential, (avg, max) ≥0.25% Commercial, (max) ≥0.2%	PASS
CURL	ISO 23999:2008 (70°C, 6h)	≥2mm	PASS
RESISTANCE TO CHEMICALS	ASTM F925-13	No more than a slight change in surface dulling, surface attack or staining	PASS
RESISTANCE TO HEAT	ASTM F1514-03(2013)	(avg, max) ΔE* <8	PASS
RESISTANCE TO LIGHT	ASTM F1515-15	(avg, max) ΔE* <8	PASS
REACTION TO FIRE	EN 14041:2004 & BS EN 14041:2004	–	Bfl-s1
SLIP RESISTANCE	EN 14041:2004 & BS EN 14041:2004	–	R10
FORMALDEHYDE EMISSION	EN 14041:2004 & BS EN 14041:2004	–	PASS
PHYSICAL DETAILS			
TOTAL THICKNESS	–	–	6mm
WEAR LAYER	–	–	0.5mm
CLICK SYSTEM	–	–	2G
EDGE	–	–	MICRO BEVEL
UNDERLAY	–	–	IXPE

PACKING DETAILS

SERIES	SIZES	PCS / CTN	M2 / CTN	M2 / PLT	CTN / PLT	KG / M2
ASPEN	226X1524mm	8	2.755	110.20	40	10.6



SHADE
VARIATION



UNIFORM
APPEARANCE
V1



SLIGHT
APPEARANCE
V2



MODERATE
APPEARANCE
V3



SUBSTANTIAL
APPEARANCE
V4

Midastiles
BEYOND THE SQUARE
TILE
SPACE
GROUP